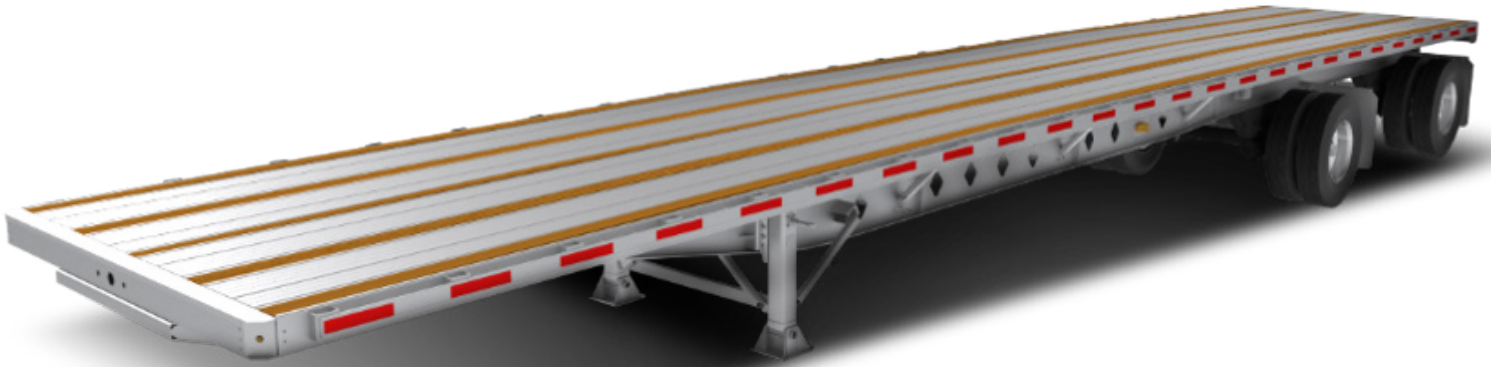


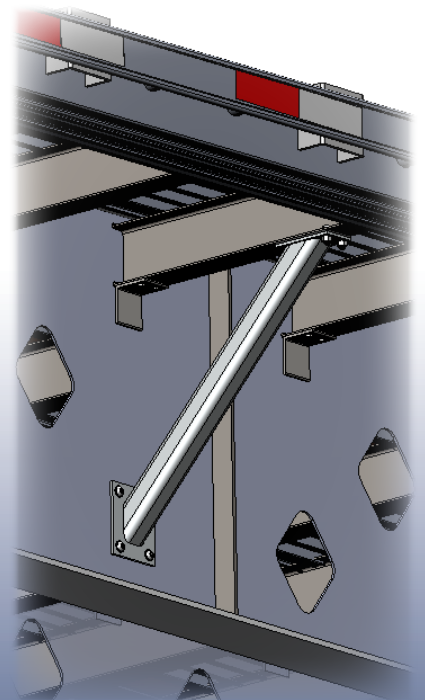
TRANSPORTING YOU FORWARD

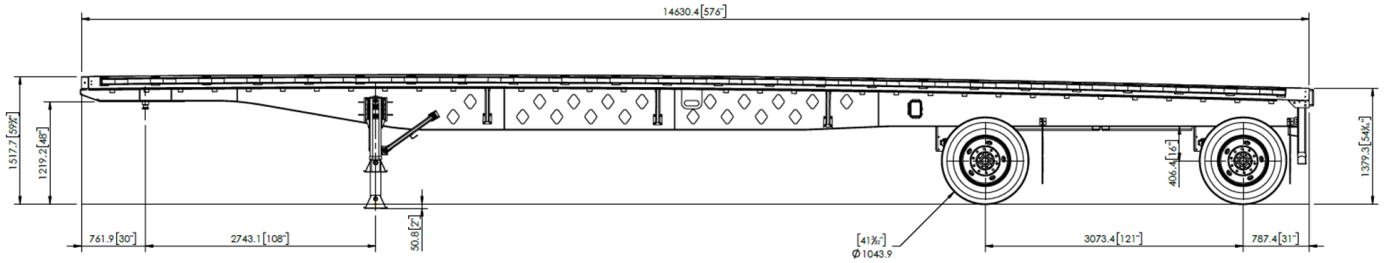


## **NEW** HT Duralite®

The new HT Duralite® is designed to be Hyundai's **strongest and lightest flatbed**, featuring a newly enhanced combination of lightweight aluminum and steel. Standard hot-dipped galvanization protects from corrosion and harsh weather conditions. Various customized lengths allow you to tailor the HT Duralite® to fit your transportation needs.

For more information, visit: [HyundaiTranslead.com](http://HyundaiTranslead.com)





**Standard Features:**

- Lighter aluminum and high tensile steel materials
- Hot-dipped galvanized components
- Aluminum and wood combination flooring

**Standard Hot-Dipped Galvanized Components include:**

- Upper coupler, steel crossmembers
- Landing gear and mounting brackets
- Rear frame, impact guard, and turn signal brackets

**STANDARD SPECIFICATIONS**

GENERAL		UNDERFRAME	
Length	Exterior: 48' 0"	Crossmembers	Hot-dipped galvanized four inch deep I beam on 16" centers. Crossmembers bolted to main beam using brackets.
Width	Exterior: 102.36"	Floor	Aluminum extrusion with three 1 1/8" thick Apitong wood planks for nailing.
Capacity	68,000 GVWR	Landing Gear	Aluminum K-brace. Two speed, 50,000 lbs. capacity, A.A.R. rated, with 10"x10" sandshoes. Roadside crank handle.
Tare Weight	9,890 lbs	Underride Guard	Meets CMVSS 223 Regulations requirements for energy absorption and displacement. Bolt-on type with special 4" square tube, hot-dipped galvanized with recess for conspicuity tape with end cap to prevent slippage.
BODY CONSTRUCTION		PAINT & FINISH	
Frame	Fully hot-dipped galvanized frame. Main beam is high tensile steel with a web thickness of 3/17" and a 3/8" (80 ksi) flange.	Paint	Undercoating on axles & suspension only. Main beam, crossmembers and rear underride guard fully hot-dipped galvanized.
Front Sill	Aluminum extruded, 6 1/2" high.	Decals	D.O.T. approved Hyundai Translead logo conspicuity tape and FHWA inspection sticker.
Rear Sill	Aluminum extruded, 9" high.	Miscellaneous	White mud flaps with Hyundai logo mounted on rear.
Fifth Wheel Plate	Nominal thickness of 1/4", 80 ksi minimum.	Warranty	Limited five year warranty.
King Pin	Jost king pin located at 30". A.A.R. rated 3-3/8" king pin located 30" from the front		
Side Rails	Aluminum extruded profile with aluminum rub rail, stake pockets.		
SUSPENSION			
Suspension	Hendrickson Intraax AANT23K Air Ride with 121" fixed spread.		
Hub & Drums	Ten stud, hub piloted with outboard mounted brake drums.		
Wheels	Pre-painted white 8.25x22.5 steel disc.		
Tires	Low profile 22.5 radial tires.		
Axles	Five inch round, 20,000 lb. rating, 77-1/2" track.		
Brakes	Non-asbestos lining 16.5"x7" quick change type, "S" cam operated automatic slack adjuster.		
ABS System	Two sensor, one modulator valve (2S/1M) system, no diagnostics tool. PCL4Trucks compatible system.		
Oil Seals	Stemco Platinum Performance Plus		



All dimensions are nominal. Consult factory for special options available. Specifications subject to change without notice.

A subsidiary of Hyundai Motor Company  
800-251-0871 • www.hyundaitranslead.com